

# MINOLTA

The essentials of imaging

[www.minoltaeurope.com](http://www.minoltaeurope.com)



# *DiMAGE* Capture

for *DiMAGE A1*

**E** INSTRUCTION MANUAL

9222-7301-11 SY-A307/ME-0308

# BEFORE YOU BEGIN

Before installing DiIMAGE Capture software, read the data-transfer section in the camera manual. This section details how to connect the camera to a computer using the USB cable. The examples in this manual assume the camera is connected to the computer with a USB cable as described in the camera manual.

This instruction manual does not provide instruction in the basic operation of personal computers, or the basic operation of Windows operating systems; refer to the manuals supplied with the computer.

Every precaution has been taken to ensure the accuracy of this material. Contact Minolta if you have any questions. Minolta is not responsible for any loss or damage caused by the use of this software.

This instruction manual may not be copied either in part or in its entirety without the prior permission of Minolta.

## TABLE OF CONTENTS

- System requirements .....3
  - DiIMAGE Capture system requirements .....3
  - About DiIMAGE Viewer.....3
- Installation .....4
  - Uninstallation .....6
- Starting up the software .....7
  - Ferrite core .....7
  - Starting up the software .....7
  - Quitting / Disconnection.....9
- Settings .....10
  - Main window .....10
  - Focus modes .....11
  - Basic tab.....12
  - Exposure tab .....15
  - Color tab .....17
  - Display focus / white balance area.....19
  - Focusing screen .....19
- Taking pictures .....20
- Preferences .....21
  - Preferences window .....21
  - File destination .....22

# SYSTEM REQUIREMENTS

## DIMAGE CAPTURE SYSTEM REQUIREMENTS

IBM PC/AT compatible computers

300MHz Intel Pentium processor II or higher and must meet the the requirements of the operating system

Windows XP (Home/Professional),  
Windows Me, Windows 2000 Professional

64MB RAM or the memory required by the operating system, whichever is greater.

100MB or more of available hard-disk space  
after installation

A True Color (24 bit) or greater monitor  
with a minimum resolution of 800 X 600.  
1024 X 768 (XGA) or higher is recommended.

CD-ROM drive

For the camera to be connected directly to the computer and used as a mass-storage device, the computer must be equipped with a USB port as a standard interface. The computer and the operating system must be guaranteed by their manufacturers to support USB interface.

## ABOUT DIMAGE VIEWER

The use of DiMAGE Viewer software ver. 2.2.0 or later is recommended. The DiMAGE Viewer is linked with DiMAGE Capture and can be installed from the DiMAGE Viewer CD-ROM, included with the camera. Many functions such as editing or correction will be available. To display RAW-image file taken with DiMAGE Capture, the DiMAGE Viewer must be installed. See the DiMAGE Viewer's manual for the details.

Minolta, The essentials of imaging, and DiMAGE are trademarks or registered trademarks of Minolta Co., Ltd. Microsoft and Windows are registered trademarks in the United States and other countries of Microsoft Corporation. The official name of Windows is Microsoft Windows Operating System. Pentium is a registered trademark of Intel Corporation. All other brand and product names are trademarks or registered trademarks of their respective owners.

# INSTALLATION

RAM-stationed programs such as anti-virus or installation-monitoring software may cause the installer to fail. Remove or disable these programs before installing DiMAGE Capture. Reinstall or enable the software when the installation is complete.

In the example below, the hard disk drive is drive E. The letters designating the drives will vary between computers. With Windows 2000 or XP, the software should be installed with the Administrator privilege.



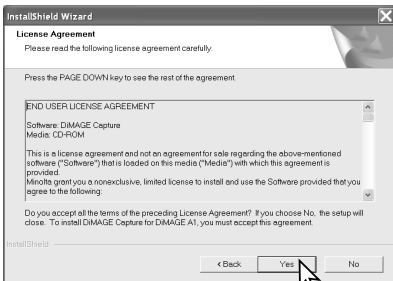
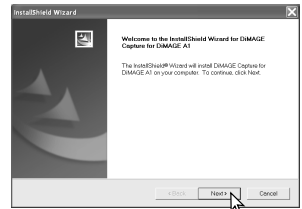
Turn on the computer to start Windows.

Insert the DiMAGE Capture CD-ROM into the CD-ROM drive. The DiMAGE Installer Menu window will open automatically.

If this display doesn't appear, double-click the CD-ROM icon and then "MLTInstApp.exe".

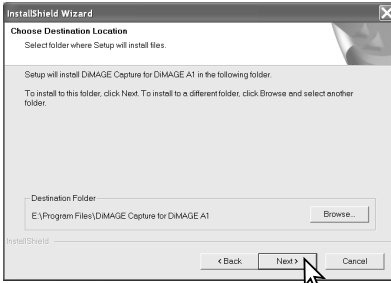
Click the "Starting up the DiMAGE Capture installer" button to begin installation.

The welcome window will open. Click "Next>" to continue.

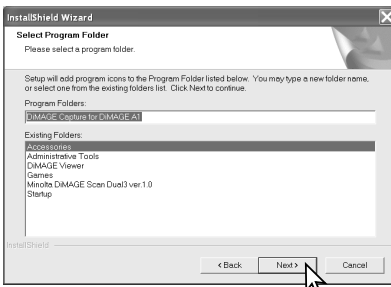


The license agreement appears. If you accept the agreement, click "Yes" to continue the installation routine.

Read the entire license agreement carefully before continuing. If you do not agree to the terms, click "No" to exit the installation program.

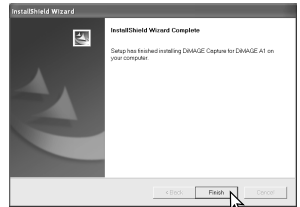


To install the software in the default location - E:\Program Files\DiMAGE Capture for DiMAGE A1, click “Next >.” To install the software in a different location, click browse button to display the folder selection window. Specify the directory in which to install the software.



The name of the default program folder is displayed. To install the software icons in this folder, click “Next>.” Installation will begin.

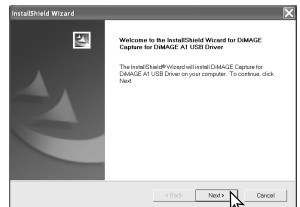
To install the software icons in another folder, select one of the folders listed in the existing-folders box below. Click “Next>” to begin installation.



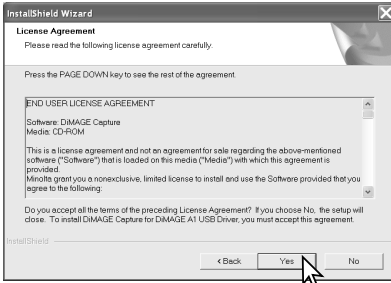
When the software installation has been completed, a message will be displayed. Click “Finish.”



Click the “Starting up the USB device driver installer” button to begin installation.



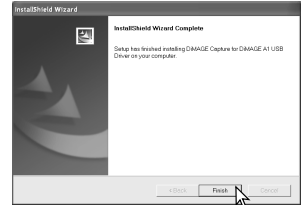
The welcome window will open. Click “Next>” to continue.



The license agreement appears. If you accept the agreement, click “Yes” to continue the installation routine.

Read the entire license agreement carefully before continuing. If you do not agree to the terms, click “No” to exit the installation program.

When the software installation has been completed, a message will be displayed. Click “Finish.”



The DiMAGE Viewer installer window will be displayed. Click “Finish” to close the window.

When using Windows Me, re-start the computer to complete the installation.

## UNINSTALLATION

Windows XP:

1. Quit the software.
2. Select Start > Control Panel > Add or Remove Programs.
3. Select DiMAGE Capture for DiMAGE A1.
4. Click Change/Remove.

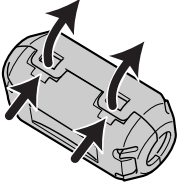
Windows Me and 2000:

1. Quit the software.
2. Select Start > Settings > Control Panel > Add/Remove Programs.
3. Select DiMAGE Capture for DiMAGE A1.
4. Click Remove.

# STARTING UP THE SOFTWARE

## FERRITE CORE

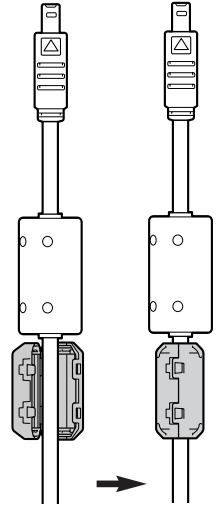
Attach the Ferrite core FRC-100 supplied with the camera to the USB cable before use. The ferrite core reduces harmful interference.



Slide a thin blunt object under the two latches on the core to open it.

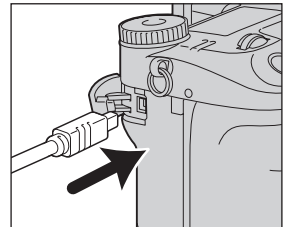
The core must be placed on the end of the cable that is connected to the camera as shown on the right.

Place the core around the cable and close. Confirm the latches on the core have caught.



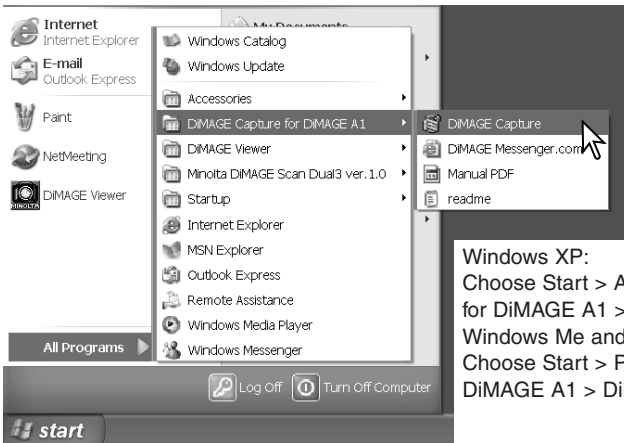
## STARTING UP THE SOFTWARE

1. Start up the computer. The computer must be on before connecting the camera.
2. Turn the camera on and select "Comp. control" in the Transfer mode in section 1 of the setup menu. See camera's manual for the detail.
3. Open the AV out / USB port cover on the camera. Attach the smaller plug of the USB cable to the camera. The plug should be firmly attached.
4. Attach the other end of the USB cable to the computer's USB port. The plug should be firmly attached. Only one camera can be connected to the computer. The camera should be connected directly to the computer's USB port. Attaching the camera to a USB hub may prevent proper operation. A memory card is not necessary.



When using the Windows XP or 2000, Windows-logo-testing message or Digital-signature-not-found message may appear when the camera is connected for the first time. Continue anyway.

5. Select and start the DiMAGE Capture.



**Windows XP:**

Choose Start > All Programs > DiMAGE Capture for DiMAGE A1 > DiMAGE Capture.

**Windows Me and 2000:**

Choose Start > Programs > DiMAGE Capture for DiMAGE A1 > DiMAGE Capture.





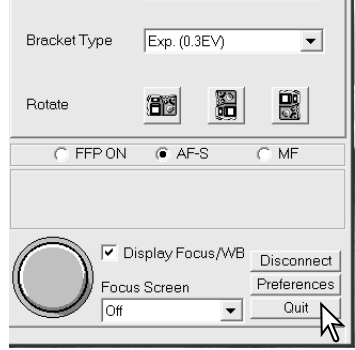
# QUITTING / DISCONNECTION

When quitting the software, click the Quit button at the lower right corner of the main window.

When disconnecting the USB cable, always quit the software first. Then, turn the camera off and disconnect the USB cable.

Never disconnect the USB cable while DiMAGE Capture shows the live image; it may damage the computer and the camera. Always quit DiMAGE Capture first and turn the camera off before disconnecting the USB cable.

Use of the AC Adapter is recommended for extended use.

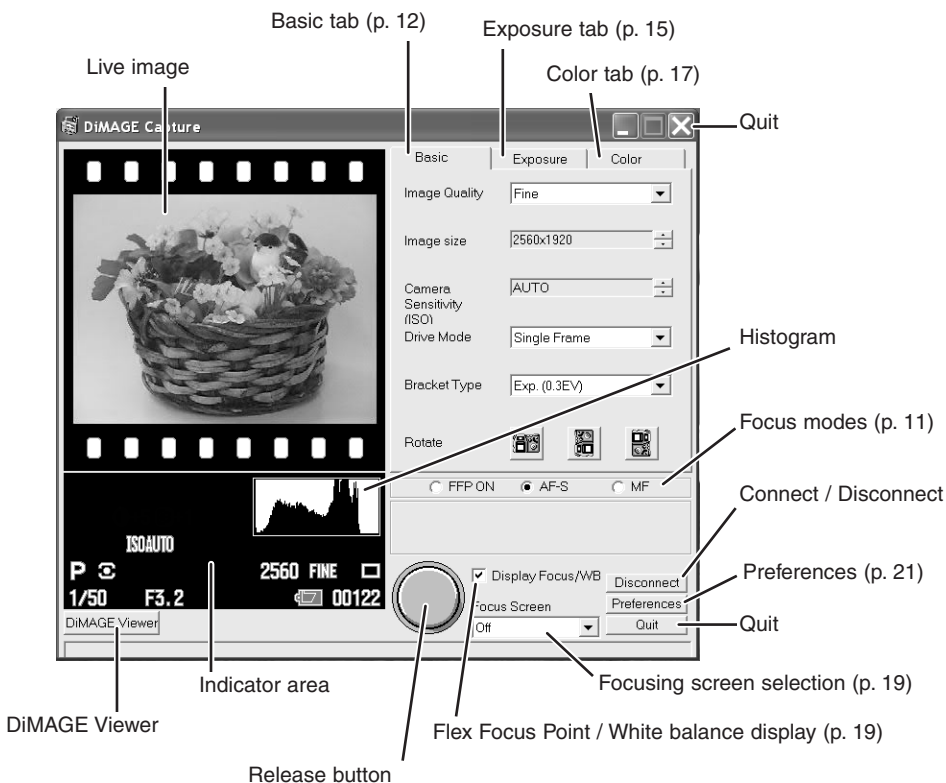


## Other notes

- Fast user switching may prevent DiMAGE Capture from operating properly.
- System standby will not work until DiMAGE Capture is closed.
- If the low-battery warning appears, DiMAGE Capture cannot be used. The computer and the camera will disconnect automatically after transferring the data.

# SETTINGS

## MAIN WINDOW



Live image:

Displays the image the camera is capturing.

Quit button:

Quits the software.

Histogram:

The dark area of the histogram shows the luminance distribution of the recorded image from black (left) to white (right).

Connect/Disconnect:

Switches connection and disconnection between the camera and the computer.

DiIMAGE Viewer:

If the DiIMAGE Viewer is already installed, clicking this button will start up the DiIMAGE Viewer.

Indicator area:

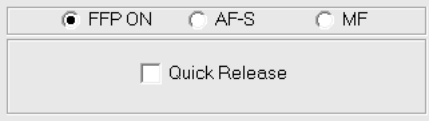
Settings of the camera are shown here.

Release button:

Placing the mouse cursor over this button acts the same as pressing the camera's shutter-release button partway down and activates the autofocus and autoexposure system; the edge of the button turns green. Click the button to take a picture, see page 20.

For the detail of each operation, refer to the camera's manual.

# FOCUS MODES

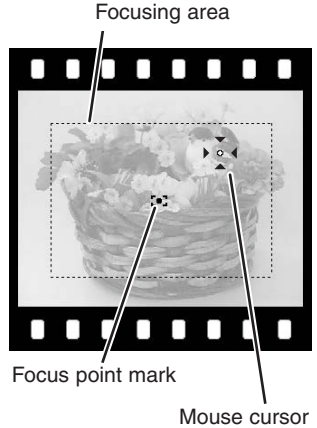


One of three focus modes can be selected: Flex Focus Point (FFP), Single-shot AF (AF-S), or Manual focus (MF).

## Flex Focus Point (FFP)

The focus point can move anywhere inside the focusing area. When FFP is on, the focus point mark appears in the live image. Move the mouse cursor freely over the focusing area. Click the point you want to focus. The focus point mark moves to the point you clicked.

After setting, the focus point mark remains. It can be turned on or off (p. 19). Move the mouse cursor over the release button and take the picture.



## QUICK RELEASE

Quick release can be used with the Flex Focus Point. When active, set the focus point mark by left-clicking on the live image, and right-click to release the shutter. A left-click not only sets the focus point but also activates autofocus and auto-exposure; the edge of the release button turns green.

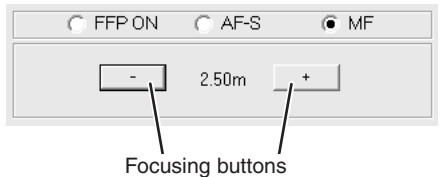


## Single-shot AF (AF-S)

Suitable for taking still subjects. Place the mouse cursor over the release button to activate autofocus and autoexposure; the edge of the button turns green. Picture will be taken when the release button is clicked.

## Manual focus (MF)

When manual focus is selected, the focusing buttons appear. Click either + or - button. + button sets the focus on a farther object, and - button on a nearer object. The approximate object distance from the CCD is displayed between the buttons.



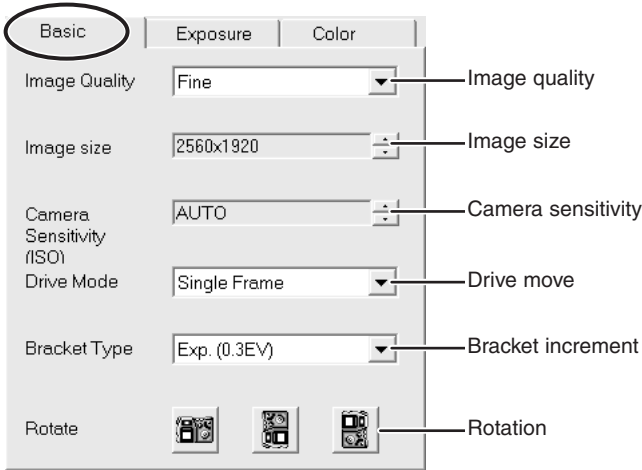
## ELECTRONIC MAGNIFICATION

When manual focus is selected, the image can be magnified by X8 to confirm the focus. Click anywhere on the live image. The image of the clicked area will be magnified by X8. If somewhere in the live image is clicked again, the image returns to normal size.

The DiIMAGE A1 has an automatic monitor amplification function which intensifies and turns the monitor image black and white in low-light conditions. When this function is in operation, electronic magnification cannot be used.



## BASIC TAB



### *Image quality*

Image quality can be selected from RAW, TIFF, Extra fine, Fine, and Standard. Only Extra fine, Fine, and Standard can be selected while data is transferring from the camera to the computer.

### *Image size*

Image size can be selected from 2560 X 1920, 2080 X 1560, 1600 X 1200, and 640 X 480. Only 2560 X 1920 images can be taken with RAW image quality.

# Camera sensitivity

Camera sensitivity can be selected from Auto, 100, 200, 400, and 800.

# Drive mode

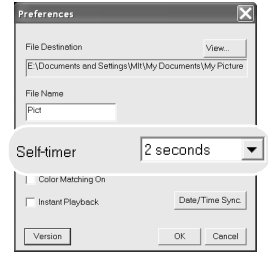
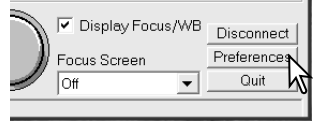
Drive mode can be selected from Single-frame advance, Self-timer, Interval, and Single-advance Bracket.

## Single-frame advance

A single image is taken each time the release button is clicked.

## Self-timer

Shutter release can be delayed by 2, 5, or 10 seconds. To select the delay time, click “Preferences” to open the preferences window (p. 21). Select the desired delay time from the self-timer item. Click “OK” to close the window. Click the release button to begin the countdown.

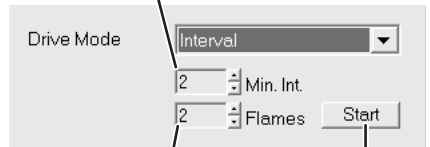


## Interval

The interval mode makes a series of images over a period of time. If MF (manual focus) is set in DiMAGE Capture, also set the camera’s focus-mode switch to MF.

1. Select Interval.
2. The computer standby appears. Click “OK.”
3. Select the length of the interval between frames and the number of frames in the series.  
Length of the interval can be selected from 2 - 60 minutes (3-60 minutes when the quality is TIFF or RAW). Total interval series cannot exceed 24 hours.
4. Press the Start button to start the interval.

Length of the interval



Number of frames

Start button

# Using Interval with DiMAGE Capture

Your computer may not be able to record using the interval drive mode even if the system requirements are met. Actual performance depends on the design specifications and system environment of the computer. The following recommendations may improve the performance of your computer while using the interval drive mode:

- 1) Close all other applications when using DiMAGE Capture.
- 2) Disable all RAM-stationed programs.
- 3) Only use the Extra Fine, Fine, or Standard image-quality settings.
- 4) Set the image size to 2080x1560, 1600x1200, or 640x480.

During the interval series, the screen on the right will appear on the computer. The camera will stop recording when the number of frames set has been taken, when the hard disk is full, or when the battery has been exhausted. The use of an AC Adapter is recommended when recording with long intervals or a large number of frames.



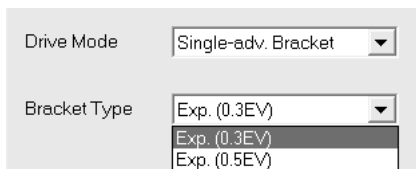
When the interval finishes, the camera will be disconnected automatically. Click "OK" to close the window. To take more pictures, click the connect button to reconnect the camera.

To stop the interval before taking the number of frames set, click "Cancel." The camera will be disconnected automatically. Click "OK" to close the window. To take more pictures, click the connect button to reconnect the camera.

### Single-advance bracket

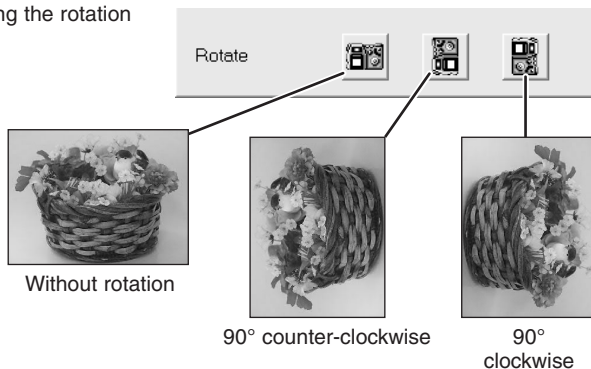
The bracket drive mode makes a series of three images with differing exposures: normal exposure, underexposure, and overexposure.

Select the desired bracket increment (0.3EV or 0.5EV), then click the release button for each picture.



### Rotate

The live image can be rotated by clicking the rotation buttons. Captured image is not rotated.



# EXPOSURE TAB

| Basic                 | Exposure      | Color                 |
|-----------------------|---------------|-----------------------|
| Shutter Speed         | 1/30          | Shutter speed         |
| Aperture              | F3.5          | Aperture              |
| Exposure mode         | Program       | Exposure mode         |
| Metering Mode         | Multi-segment | Metering mode         |
| Exposure Compensation | 0EV           | Exposure compensation |
| Flash Compensation    | 0EV           | Flash compensation    |
| Flash Mode            | Fill-flash    | Flash mode            |
| Flash control         | ADI flash     | Flash control         |

## Exposure mode

Exposure mode can be selected from Program mode, Aperture priority mode, Shutter priority mode, and Manual mode.

## Program mode

Shutter speed and aperture are set automatically.

## Aperture priority mode

Select the Aperture priority mode, and then set the aperture. If the aperture value is beyond the shutter-speed range, the shutter-speed display will turn red; change the aperture to obtain proper exposure.

|               |               |
|---------------|---------------|
| Shutter Speed | 1/250         |
| Aperture      | F5.6          |
| Exposure mode | Aperture Pri. |

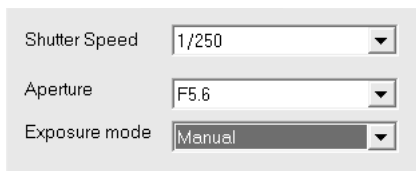
## Shutter priority mode

Select the Shutter priority mode, and then set the shutter speed. If the shutter-speed value is beyond the aperture range, the aperture display will turn red; change the shutter speed to obtain proper exposure.

|               |              |
|---------------|--------------|
| Shutter Speed | 1/250        |
| Aperture      | F5.6         |
| Exposure mode | Shutter Pri. |

## *Manual mode*

Select the Manual mode, and then set the shutter speed and aperture. When the flash is not in use, as changes are made to the exposure, the effect will be visible on the live image.



A screenshot of a camera's settings menu. It features three dropdown menus. The first is labeled 'Shutter Speed' and is set to '1/250'. The second is labeled 'Aperture' and is set to 'F5.6'. The third is labeled 'Exposure mode' and is set to 'Manual'.

## *Metering mode*

Metering mode can be selected from Multi-segment, Center weighted, FFP Spot, and Center Spot. In FFP (Flex Focus Point) Spot, the metering area moves with the focus point. In Center Spot, it always stays at the center. When the exposure mode is set to Manual mode, the metering mode cannot be selected.

## *Exposure compensation*

The ambient light can be adjusted to make the final picture lighter or darker. Exposure can be adjusted by as much as  $\pm 2\text{Ev}$  in  $1/3$  increments. When the exposure mode is set to Manual mode, the exposure compensation cannot be adjusted.

## *Flash compensation*

Flash burst can be adjusted to make the final picture lighter or darker. Exposure can be adjusted by as much as  $\pm 2\text{Ev}$  in  $1/3$  increments.

## *Flash mode*

Flash mode can be selected from Fill-flash, Red-eye reduction, Rear flash sync, and Wireless. When Wireless is selected, attach the Program Flash 5600HS(D) or 3600HS(D) to the camera first, turn on the flash, then select Wireless in DiMAGE Capture.

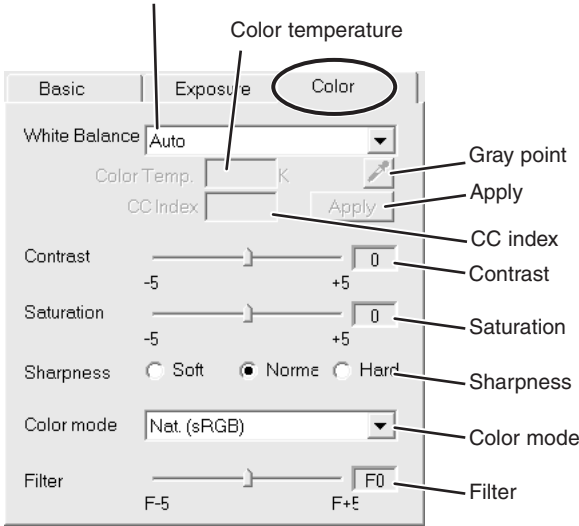
## *Flash control*

Flash control can be selected from ADI flash metering, Pre-flash TTL, and Manual flash control (1/1, 1/2, 1/4, 1/8, and 1/16). When the flash mode is set to Red-eye reduction, ADI flash metering is always set. When the flash mode is set to Wireless, Pre-flash TTL is always set. Manual flash control is available only when the flash mode is set to Fill-flash or Rear flash sync.



# COLOR TAB

## White balance



## White balance

White balance can be selected from Auto, Preset, or Manual white balance.

## Auto / preset white balance

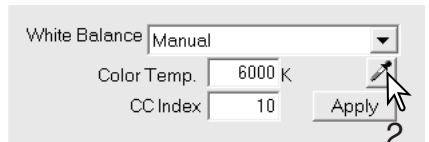
When Auto is selected, the white balance is adjusted automatically. Preset white balance can be selected from Daylight, Cloudy, Shade, several kinds of Fluorescent, Tungsten, and Flash.

## Manual white balance

White balance can be calibrated by a neutral point within the image or by specifying the color temperature and CC index of the light used to record the image.

## Using a neutral point

1. Select Manual.
2. Click the gray-point button.



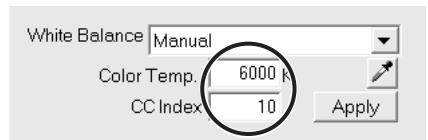
3. Move the mouse onto the live image.
4. With the dropper tool, click a neutral area of the image to be defined as the gray point. The color temperature and CC index will be displayed automatically.

The area used to calibrate the gray point must be neutral. The brightness level of the area is not important, but if the area has a definite color, the image will not be color balanced correctly. The dropper tool can be turned on or off by the gray-point button.



## *Specifying the color temperature and CC index*

1. Select Manual.
2. Input the color temperature and the CC index.
3. Click the Apply button.



Color temperature can be adjusted between 2500 - 10000K. CC index can be adjusted between -60 to 60, integer only.

A color temperature approximately lower than 3,200K and a high CC index cannot be set at the same time. If the value-outside-range message appears, change one or both values.

A Minolta color meter can be used to measure the approximate color temperature of a scene when capturing a RAW image. The recorded color temperature and CC index value from the meter can be entered in the text boxes to set the white balance. A green CC value should be entered as a negative integer and a magenta value as a positive integer. When making the reading, both the color temperature and the CC value must be recorded.

If the image is captured under a continuous source like the sun or tungsten lighting, the corresponding measurement can be very effective in balancing the color of the image. However, because the spectral response of the camera's CCD and the color meter are not the same, if images are captured under lighting with a discontinuous line spectrum like fluorescent or mercury vapor, the values recorded with the color meter may not result in an accurate reproduction.

## *Contrast*

Contrast can be adjusted within eleven levels ( $\pm 5$ ).

## *Color saturation*

Color saturation can be adjusted within eleven levels ( $\pm 5$ ).

## Sharpness

Sharpness can be adjusted within three levels: Soft, Normal, and Hard.

## Color mode

Color mode can be selected from Natural (sRGB), Vivid (sRGB), Adobe RGB, Embedded Adobe RGB, Black & white, and Solarization.

When the color mode is set to Black & white, color saturation cannot be adjusted.

When the color mode is set to Solarization, contrast and color saturation cannot be adjusted.

## Filter

WHEN THE COLOR MODE IS SET TO NATURAL, VIVID, OR Adobe RGB

Filter can be adjusted within eleven levels ( $\pm 5$ ). A positive adjustment acts like a warming filter. A negative adjustment makes the image cooler.

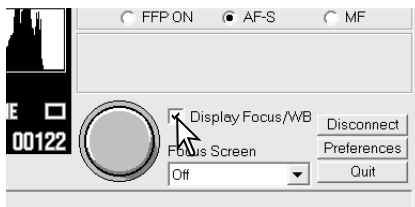
WHEN THE COLOR MODE IS SET TO BLACK & WHITE

Filter can tone the neutral monochrome image in eleven steps.

When the color mode is set to Solarization, filter effect cannot be set.

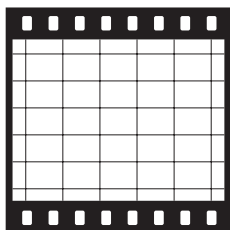
## DISPLAY FOCUS / WHITE BALANCE AREA

Focus point mark in the Flex Focus Point (p. 11) and the dropper tool mark in the Manual white balance (p. 18) can be turned on or off.

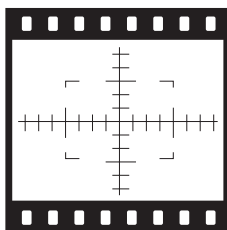


## FOCUSING SCREEN

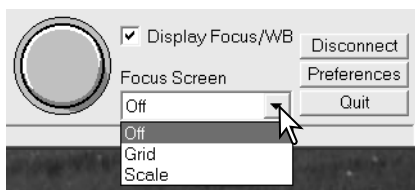
Grid or Scale focusing screen can be selected.



Grid



Scale



# TAKING PICTURES

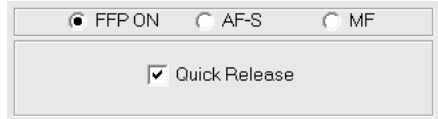
## *Using release button*

Placing the mouse cursor over the release button acts the same as pressing the camera's shutter-release button partway down and activates the autofocus and autoexposure system; the edge of the button turns green.

Click the release button to take a picture.

If Quick Release is checked with Flex Focus Point (FFP) on, set the focus point mark by left-clicking on the live image focusing area. The edge of the release button turns green and autofocus and autoexposure system are activated.

Right-click the mouse to take a picture.



## *Using computer's keyboard*

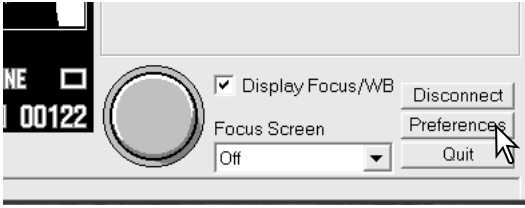
Pressing the F9 key on the computer's keyboard will release the shutter. This doesn't work when the focus is set to FFP and Quick release is selected.

## *Other notes when taking pictures*

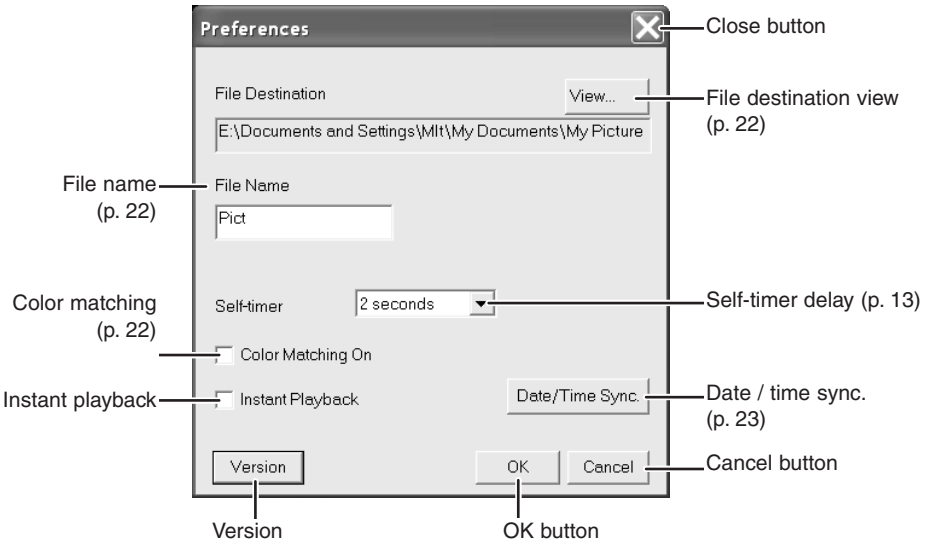
- Pictures will be saved in My Picture folder. This folder can be changed. See page 22.
- When flash is necessary, raise the camera's built-in flash.
- When the image size is large and quality is high, the large file sizes may prevent the capture of successive images. The edge of the release button glows green while the image is being recorded. Wait until the glow turns off before capturing another image.
- The shutter cannot be released, and pictures cannot be saved if the hard disk is full.

# PREFERENCES

## PREFERENCES WINDOW



When Preferences button is clicked in the main window, Preferences windows will appear.

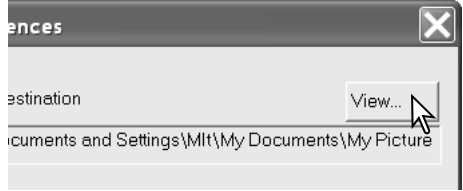
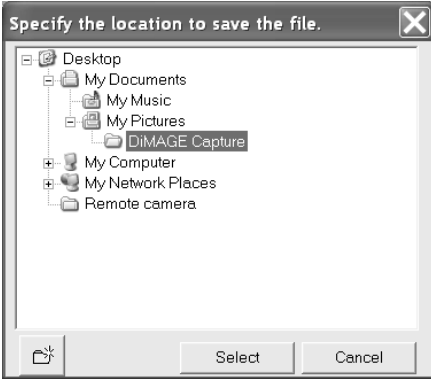


- Instant playback:** When checked, a captured image is displayed for two seconds after it is recorded.
- Version:** When clicked, software version information window will appear. Click OK to close the window.
- Close button:** Closes the window without saving the changes.
- Self-timer delay:** To set self-timer delay time: 2, 5, or 10 seconds.
- Cancel button:** Closes the window without saving the changes.
- OK button:** Closes the window after saving the changes.

# FILE DESTINATION

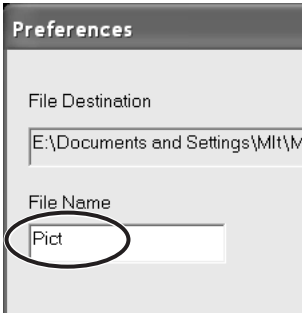
Images will be saved in My Picture folder. This can be changed.

Click "View..." on the File destination to open the folder tree.



Select the folder where you wish to save the images. Click "Select" to complete the operation. A new folder can also be created in this window.

# FILE NAME

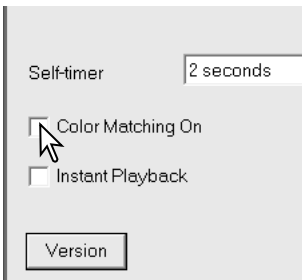


File names consist of up to 16 alphanumeric characters, followed by a five-digit serial number. The displayed file name can be changed. The serial number is attached automatically and cannot be changed.

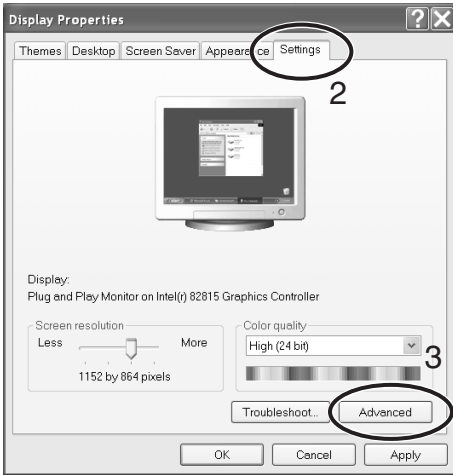
Use letters or numbers which are acceptable as a file name in the Windows operating system. Unacceptable characters cannot be used.

If the serial number reaches 99999, additional pictures cannot be saved in the same folder. Change the folder or file name.

# COLOR MATCHING

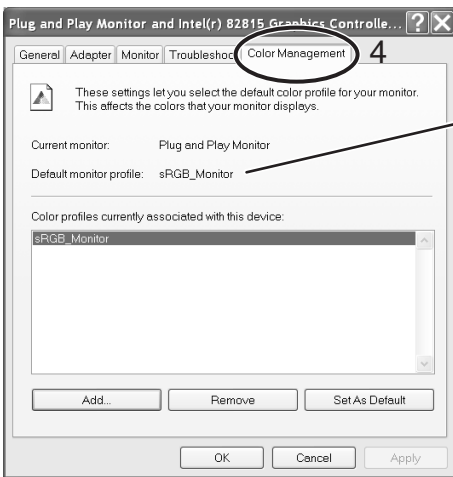


When this item is checked, the live image is displayed with color matching. Monitor profile set in Color management of the Windows operating system will be applied. With color matching on, live image speed may change according to the computer's performance.



Default monitor profile set in Color management of the Windows operating system can be confirmed or changed by the following procedure;

1. Right-click the mouse on the desktop, or select Desktop from Control Panel.
2. Select "Settings" tab.
3. Click "Advanced."



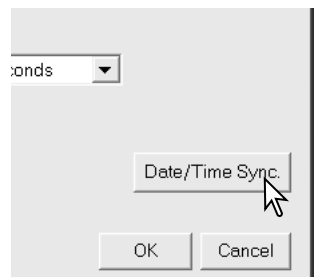
4. Click "Color Management" tab.

Default monitor profile

To change the default monitor profile, select the desired profile from the list and click "Set As Default." To show other profiles in the list, click "Add..." select the profile, and click "Add."

## Date / time synchronization

The camera's clock and calendar settings can be synchronized with the computer's. Click the "Date/Time Sync." button. A synchronization message will appear. Click "OK" to synchronize the clock and close the window.



**MINOLTA**

©2003 Minolta Co., Ltd. under the Berne Convention and the Universal Copyright Convention.

Printed in Germany

9222-7301-11 SY-A307/ME-0308