



DiMAGE 7Hi Camera Firmware Ver.101e

This section explains how to install DiMAGE 7Hi firmware version Ver.101e. (Firmware is software used internally to control the camera.) Be sure to read through the following explanation before you install the software. Do not turn the camera OFF during installation; doing so could damage the CPU inside the camera.

Contents of update

SD memory card can also be used in this model by using a SD card-to-CF card adapter.

Note: Minolta does not manufacture SD card to CF card adapters.

Contact the manufacturer of the adapter for details.

Target products

This firmware is for use only with the DiMAGE 7Hi and cannot be used with other products. If the firmware version is already Ver.101e, it is not necessary to update the firmware. (Use the following method to check the firmware). This firmware is intended for versions ending with the letter [e]. The update does not work correctly if it is installed in other products.

Checking the firmware version

- (1) Set the main switch/mode dial of the camera to the setup position.
- (2) Press the digital-subject-program button.
- (3) Check the number (the red frame in the figure) displayed in the LCD monitor display of the camera.
- (4) Products with version numbers other than Ver.101e are eligible for a firmware upgrade.



Preparing the compact flash card for updating

Use one of the following methods to prepare a CompactFlash card to update the firmware. Format a 4 MB or larger CompactFlash card in the camera



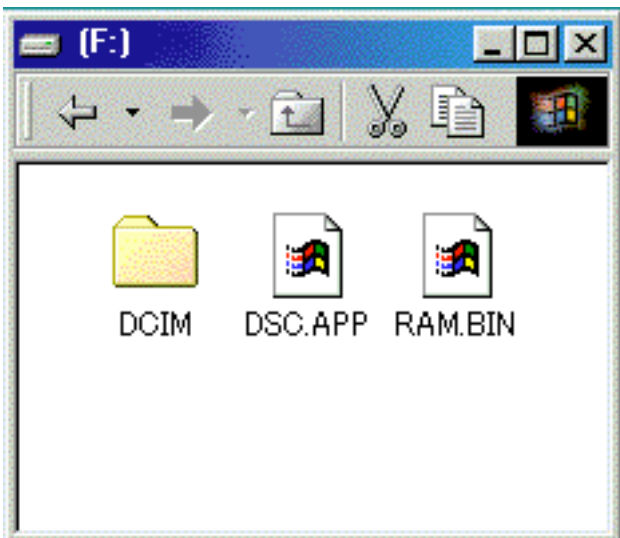
When copying via CompactFlash card drive



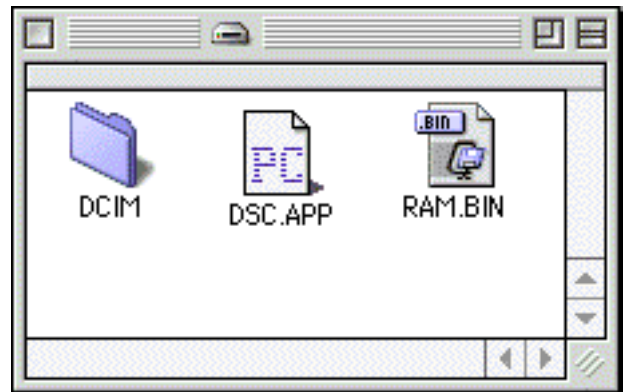
When copying via DiMAGE 7Hi connected to PC using USB-cable USB-100

The downloaded file is compressed.

1. After creating a folder in your PC and extracting the contents of the archive, the following files are created.



For Windows



For Macintosh

DSC.APP	Firmware
RAM.BIN	Software for update.

After extraction, copy the files named "RAM.BIN" and "DSC.APP" into the root directory of the CompactFlash card.

2. Before removing the CompactFlash card, confirm that the two files have been copied.
3. Remove the CompactFlash card from the camera or disconnect the USB cable from the camera.



If you are using Windows Me, 2000 or XP, click the unplug-or-eject-hardware icon in the lower right-hand corner of the screen, wait until the safe-to remove-hardware window appears, then remove the CompactFlash card from the card reader, or disconnect the USB cable from the camera.

How to update firmware



Note:

When performing the firmware update, use a set of fully charged Ni-MH (nickel hydrogen) batteries or an AC adapter AC-1L or AC-2L (sold separately). When you use an AC adapter, be sure not to inadvertently disconnect the camera during the firmware update procedure.

- (1) Insert the prepared CompactFlash card into the DiMAGE 7Hi, and press the shutter-release button with the main switch/mode dial at the OFF position.
- (2) Holding the shutter-release button down, set the main switch/mode dial to the recording mode position.
- (3) The access lamp lights for a short period, around two minutes. (You can release the shutter-release button after the access light is lit.)
- (4) When the access lamp goes out, the update procedure is completed. Remove the batteries, then re-insert it. If you are using an AC adapter, disconnect the AC adapter and/or remove batteries if any inside as well.)
- (5) As described above, check the version number displayed on the LCD monitor display. If the number has changed to Ver.101e, the update was performed successfully.

* If update was not performed correctly, or an error occurred during the update procedure, turn off the power of the camera, then proceed from Step (1) again.

* Before you use the Compact Flash card for storing image data, first format it again in the camera or delete the two files.

* Windows and Windows Me, 2000 and XP are registered trademarks of Microsoft Corporation in the U.S.A and other countries.

* Macintosh is a registered trademark in the U.S.A. and other countries.