

KONICA MINOLTA SOFTWARE INSTALL GUIDE

www.konicaminolta.com

www.konicaminoltasupport.com

DiMAGE A200 Camera Firmware Ver.1.01

This section explains how to install DiMAGE A200 firmware version 1.01. (Firmware is software used internally to control the camera.) Be sure to read through the following explanation before you install the software. Do not turn the camera OFF during installation; doing so could damage the CPU inside the camera.

Contents of update

To support CompactFlash card exceeding 4GB.

NOTE

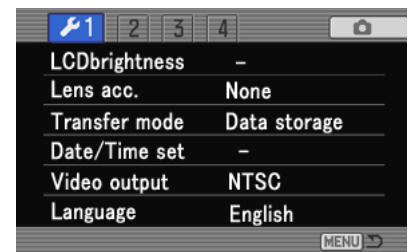
Deleting a large amount of data from a large capacity memory card may take several minutes. In this case, use the camera's format function or delete the data using a computer. Do not format the card with the computer.

Target products

This firmware is for use only with the DiMAGE A200 and cannot be used with other products. If the firmware version is already Ver.1.01, it is not necessary to update the firmware. (Use the following method to check the firmware version.)

Checking the camera firmware version

1. Press the main switch to turn on the camera.
2. Press and hold the shift button (1) and press the menu button (2) to open the setup menu. (Confirm that the section 1 menu tab is highlighted.)
3. Press the display information button (3). A window will open to indicate the firmware version.
4. Check the version number of displayed on the LCD monitor. If the version is Ver.1.00, the camera must be updated.
Press the central button of controller to close the version number display.



Preparing the compact flash card for updating

A downloaded file must be copied to a CompactFlash (CF) card in the camera. Before updating the camera, read the data-transfer section of the DiMAGE A200 instruction manual to connect the camera to a computer.

- Prepare a 16MB or larger CompactFlash card and insert it in the camera.
- Make sure that the CompactFlash card has been formatted by the camera.
- Using the USB cable, connect the camera to a computer. If the camera is not compatible with the computer system, a CompactFlash card reader can be used instead.
- Confirm the option "Transfer mode" in section 1 of the setup menu is set to "Data storage", the default setting.



When copying via CompactFlash card reader



When copying via DiMAGE A200 connected to PC using USB-cable USB-3

1. Two respective download files have been prepared for Windows & Macintosh. Please use the suitable one for your PC. Please read the end-user license agreement in advance of saving the file on your PC.

The downloaded file is compressed.

-Windows- a200v101.exe--1.27MB

Double-click the downloaded file.

The file is a self-extracting archive, and decompresses automatically.

-Macintosh- a200v101.sit.hqx--1.6MB

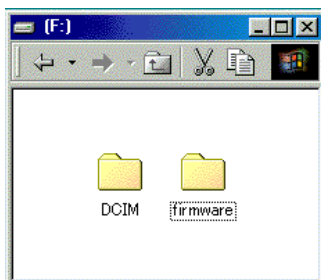
Use Stuffit Expander or another such software utility to extract the downloaded file.

After creating a folder in your PC and extracting the contents of the archive, the following folder is created.

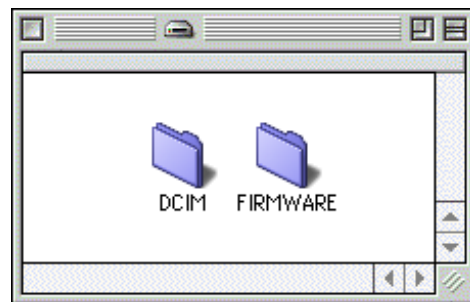
"firmware" folder: "firmware" folder includes bellow files.

"firmware.bin" file: Windows 3.17MB / Macintosh 3.2MB)

Copy the "firmware" folder onto the CompactFlash card.



For Windows



For Macintosh

2. Confirm that the file has been copied to the card using the computer.
3. Disconnect the camera from the computer or remove the CompactFlash card from the card reader.

If you are using Windows Me, 2000 or XP, click the unplug-or-eject-hardware icon in the lower right-hand corner of the screen, wait until the safe-to remove-hardware window appears, then remove the CompactFlash card from the card reader, or disconnect the USB cable from the camera.



How to update firmware

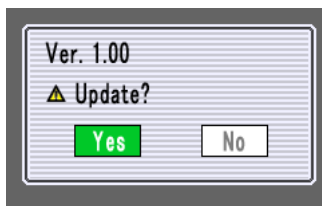
Note:

When performing the software update, use fully charged lithiumion batteries or the AC adapter AC-11 (sold separately). When using the AC adapter, be sure not to inadvertently disconnect the camera during the software updating procedure, otherwise the camera may be permanently damaged.



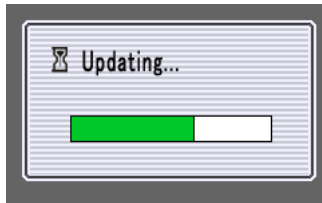
1. With the camera off, insert the prepared CompactFlash card.

Set the mode switch to the playback position and turn the camera on.



2. When the confirmation screen appears, use the left/right keys of the controller to highlight "Yes".

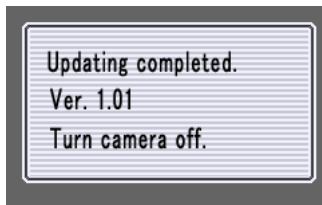
"No" will cancel the operation.



3. Press the central button of controller to start the updating procedure.

4. When the updating-completed message appears, the updating procedure is complete. Turn the camera off. Remove the CompactFlash card.

* If the updating-completed message does not appear within 10 minutes, an error occurred during the procedure. Turn the camera off and remove the batteries or disconnect the AC adapter. Repeat the procedure from step 1.



5. Set the mode switch to the recording position, and turn the camera on.



If you turn the camera on at playback mode, confirmation screen appears again. Use the left/right keys of the controller to highlight "No." and press the central button of controller to close.



6. Check that the camera software version number has changed to "Ver.1.01". (See the "Checking the camera firmware version")

7. After updating, be sure to perform "Recording Mode Reset" (ref. page 93 in Owners manual) function.

* After updating the camera, delete the firmware folder from the CompactFlash card.

* Windows and Windows Me, 2000 and XP are registered trademarks of Microsoft Corporation in the U.S.A and other countries.

* Macintosh is a registered trademark of Apple Computer Inc. in the U.S.A. and other countries.

For questions or comments about this matter, contact your nearest Konicaminolta service facility.