

KONICA MINOLTA SOFTWARE INSTALL GUIDE

www.konicaminolta.com

www.konicaminoltasupport.com

DiMAGE Z3 Camera Firmware Ver.1.03e

This section explains how to install DiMAGE Z3 firmware version 1.03e. (Firmware is software used internally to control the camera.) Be sure to read through the following explanation before you install the software. Do not turn the camera OFF during installation; doing so could damage the CPU inside the camera.

Contents of update

To support 2GB SD memory card.

Target products

This firmware is for use only with the DiMAGE Z3 and cannot be used with other products.

If the firmware version is already Ver.1.03e, it is not necessary to update the firmware. (Check the firmware version as shown below.)

Checking the camera firmware version

1. Press the main switch to turn ON the camera.
2. Press the menu button.
3. Press the right key of the controller, select SETUP icon, and press the center of the controller to display the setup menu.
4. Confirm that the section 1 menu tab is highlighted, and press the macro mode button. A window will open to indicate the firmware version.
5. Check the version number of displayed on the LCD monitor. If the version is Ver.1.02e or earlier, the camera must be updated.

Press the central button of controller to close the version number display.



Preparing the SD memory card for updating

A downloaded file must be copied to a SD memory card in the camera. Before updating the camera, read the data-transfer section of the DiMAGE Z3 instruction manual to connect the camera to a computer.

- Prepare a 8MB or larger SD memory card and insert it in the camera.
- Make sure that the SD memory card has been formatted by the camera.
- Using the USB cable, connect the camera to a computer. If the camera is not compatible with the computer system, a SD memory card reader can be used instead.
- Confirm the option "Transfer mode" in section 1 of the setup menu is set to "Data storage", the default setting.



When copying via CompactFlash card reader



When copying via DiMAGE Z3 connected to PC using USB-cable USB-2

1. Two respective download files have been prepared for Windows & Macintosh. Please use the suitable one for your PC. Please read the end-user license agreement in advance of saving the file on your PC.

The downloaded file is compressed.

-Windows- z3v103e.exe--808KB

Double-click the downloaded file.

The file is a self-extracting archive, and decompresses automatically.

-Macintosh- z3v103e.sea.hqx--1.1MB

Use Stuffit Expander or another such software utility to extract the downloaded file.

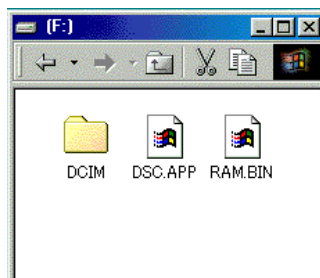
*After creating a folder in your PC and extracting the contents of the archive, the following folder is created.

"z3v103" folder "z3v103" folder includes bellow files.

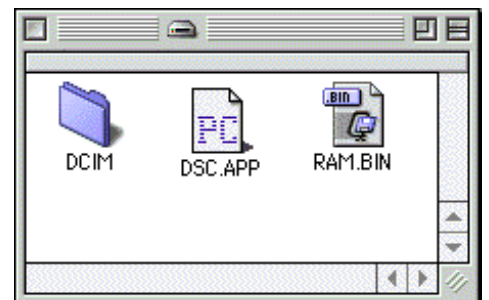
"dsc.app" file (Windows 2.07MB / Macintosh 2.1MB)

"ram.bin" file (Windows 92.9KB / Macintosh 96KB)

* Copy the "dsc.app" file and "ram.bin" file onto the SD memory card.



For Windows



For Macintosh

2. Confirm that the file has been copied to the card using the computer.
3. Disconnect the camera from the computer or remove the SD memory card from the card reader.

If you are using Windows Me, 2000 or XP, click the unplug-or-eject-hardware icon in the lower right-hand corner of the screen, wait until the safe-to remove-hardware window appears, then remove the SD memory card the card reader, or disconnect the USB cable from the camera.



How to update firmware

NOTE:

When performing the software update, use new Alkaline batteries, fully recharged Ni-MH batteries or the AC adapter AC-1L or AC-11 (sold separately).

When using the AC adapter, be sure not to inadvertently disconnect the camera during the software updating procedure, otherwise the camera may be permanently damaged.

- * After updating the firmware, it is necessary to operate the reset default function, and camera settings will be reset to the default settings.



1. With the camera off, insert the prepared SD Memory card.
2. Press and hold the shutter-release button all the way down without turning on the camera.
3. Without lifting the your finger from the shutter-release button, press the main switch to turn on the camera.
4. The access lamp will be lit. Please wait until the lamp turn off. (It takes 1 or 2 minutes. You can release your fingers from the shutter-release button and the main switch.)
5. When the access lamp turns off, updating is completed. Remove the batteries and then insert them again.

(When using AC adapter, disconnect the AC adapter and then connect it again.)



6. Check that the camera firmware version number has changed to "Ver.1.03e". (See the "Checking the camera software version")
- * If the updating failed or an error occurred during the procedure, turn the camera off, and repeat the procedure from step 1.

After checking the version number, press the center button of controller. Setup menu will be displayed.

- * After updating the camera, delete both "dsc.app" and "ram.bin" files from the SD memory card.

* Windows and Windows Me, 2000 and XP are registered trademarks of Microsoft Corporation in the U.S.A and other countries.

* Macintosh is a registered trademark of Apple Computer Inc. in the U.S.A. and other countries.

For questions or comments about this matter, contact your nearest Konicaminolta service facility.